

**Anti-CD34 Antibody**  
**Catalog # ABO10660****Specification**

---

**Anti-CD34 Antibody - Product Information**

Application	WB, IHC-P, IHC-F
Primary Accession	<a href="#">P28906</a>
Host	Rabbit
Reactivity	Human, Mouse, Rat
Clonality	Polyclonal
Format	Lyophilized

**Description**

Rabbit IgG polyclonal antibody for Hematopoietic progenitor cell antigen CD34(CD34) detection. Tested with WB, IHC-P, IHC-F in Human;Mouse;Rat.

**Reconstitution**

Add 0.2ml of distilled water will yield a concentration of 500ug/ml.

**Anti-CD34 Antibody - Additional Information**

**Gene ID** 947

**Other Names**

Hematopoietic progenitor cell antigen CD34, CD34, CD34

**Calculated MW**

40716 MW KDa

**Application Details**

Immunohistochemistry(Frozen Section), 0.5-1 µg/ml, Mouse, Rat, Human<br>Immunohistochemistry(Paraffin-embedded Section), 0.5-1 µg/ml, Human, Mouse, Rat, By Heat<br>Western blot, 0.1-0.5 µg/ml, Human, Mouse, Rat<br>

**Subcellular Localization**

Membrane; Single-pass type I membrane protein.

**Tissue Specificity**

Selectively expressed on hematopoietic progenitor cells and the small vessel endothelium of a variety of tissues.

**Protein Name**

Hematopoietic progenitor cell antigen CD34

**Contents**

Each vial contains 5mg BSA, 0.9mg NaCl, 0.2mg Na<sub>2</sub>HPO<sub>4</sub>, 0.05mg Thimerosal, 0.05mg NaN<sub>3</sub>.

**Immunogen**

A synthetic peptide corresponding to a sequence at the C-terminus of human CD34(366-382aa QATSRNGHSARQHVVAD), identical to the related mouse and rat sequences.

**Purification**

Immunogen affinity purified.

**Cross Reactivity**

No cross reactivity with other proteins

**Storage**

**At -20°C for one year. After reconstitution, at 4°C for one month. It can also be aliquotted and stored frozen at -20°C for a longer time. Avoid repeated freezing and thawing.**

**Sequence Similarities**

Belongs to the CD34 family.

**Anti-CD34 Antibody - Protein Information****Name** CD34**Function**

Possible adhesion molecule with a role in early hematopoiesis by mediating the attachment of stem cells to the bone marrow extracellular matrix or directly to stromal cells. Could act as a scaffold for the attachment of lineage specific glycans, allowing stem cells to bind to lectins expressed by stromal cells or other marrow components. Presents carbohydrate ligands to selectins.

**Cellular Location**

Membrane; Single-pass type I membrane protein.

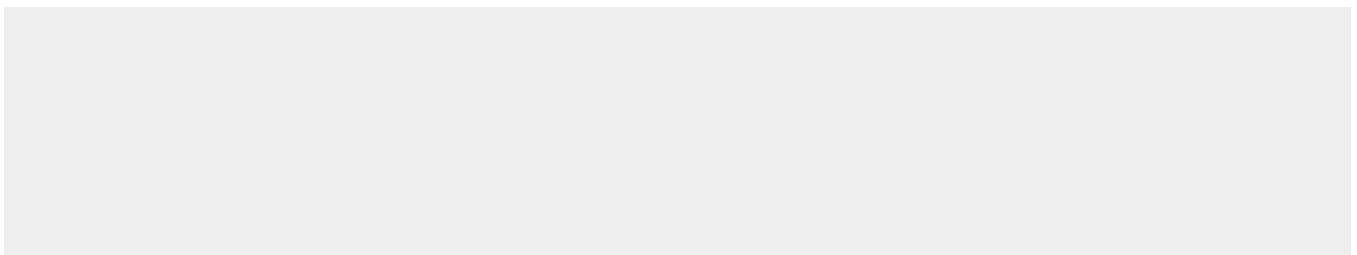
**Tissue Location**

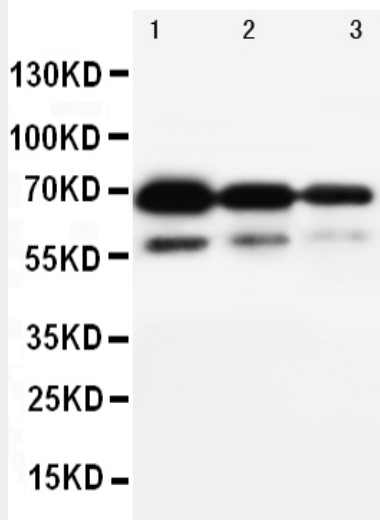
Selectively expressed on hematopoietic progenitor cells and the small vessel endothelium of a variety of tissues

**Anti-CD34 Antibody - Protocols**

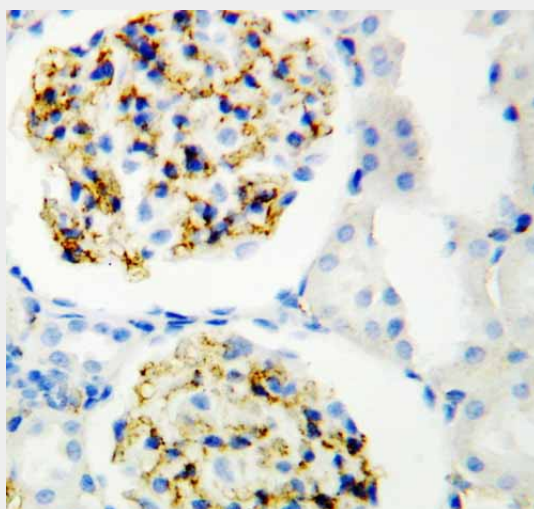
Provided below are standard protocols that you may find useful for product applications.

- [Western Blot](#)
- [Blocking Peptides](#)
- [Dot Blot](#)
- [Immunohistochemistry](#)
- [Immunofluorescence](#)
- [Immunoprecipitation](#)
- [Flow Cytometry](#)
- [Cell Culture](#)

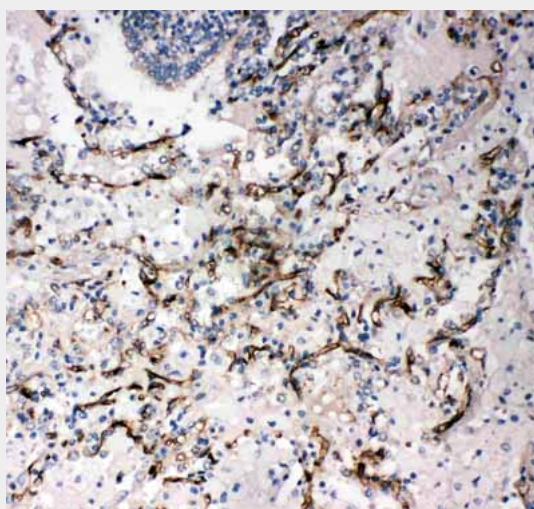
**Anti-CD34 Antibody - Images**



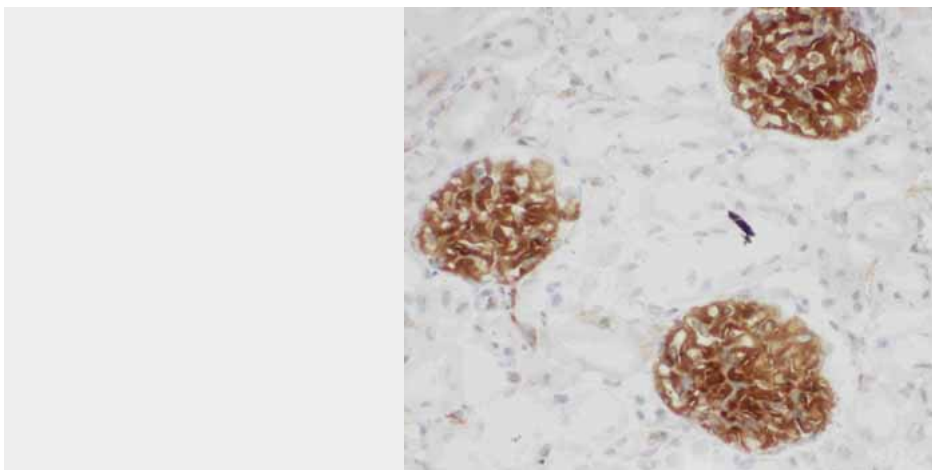
Anti-CD34 antibody, ABO10660, Western blotting  
Lane 1: Recombinant Human CD34 Protein 10ng  
Lane 2: Recombinant Human CD34 Protein 5ng  
Lane 3: Recombinant Human CD34 Protein 2.5ng



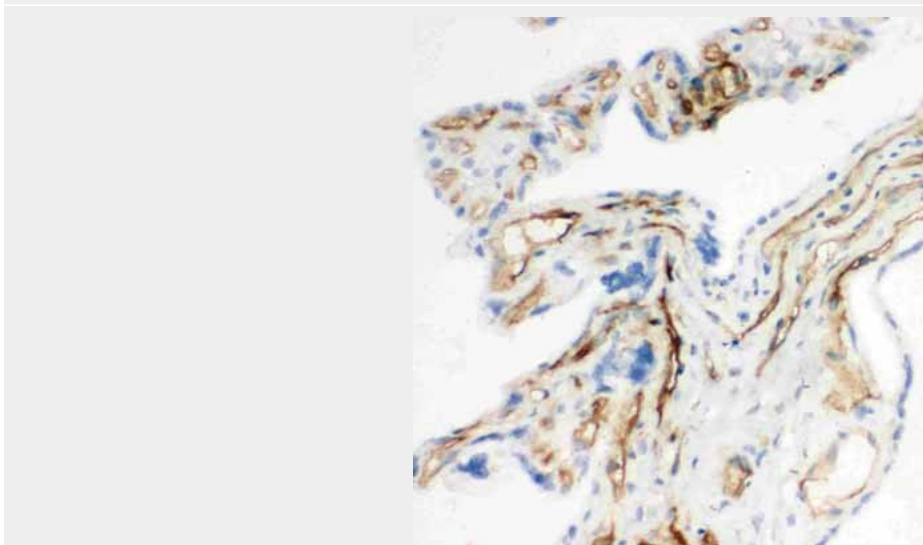
Anti-CD34 antibody, ABO10660, IHC(P)  
IHC(P): Rat Kidney Tissue



Anti-CD34 antibody, ABO10660, IHC(P)  
IHC(P): Human Lung Cancer Tissue



Anti-CD34 antibody, ABO10660, IHC(F)IHC(F): Rat Kidney Tissue



Anti-CD34 antibody, ABO10660, IHC(F)IHC(F): Rat Placenta Tissue

#### **Anti-CD34 Antibody - Background**

CD34 is a monomeric cell surface antigen with a molecular mass of approximately 110 KD. CD34 is expressed in humans in hematopoietic stem cells, vascular endothelium, and blasts from 30% of patients with acute myeloid and lymphocytic leukemia. The human CD34 gene spans 26 kb and has 8 exons, a structure quite similar to that of the murine gene. By Southern blot analysis of DNA from a panel of human x mouse somatic cell hybrids using a CD34 cDNA probe demonstrate that the gene for CD34 is located on human chromosome 1 in the 1q12----qter region. CD34 plays an important role in the formation of progenitor cells during both embryonic and adult hematopoiesis.